

87500573

LC

Tridonic, LC 20W 500mA fixC SR SNC, LED Converter Compact SNC - ESSENCE, Made In PRC, 5yrs Warranty



DATA SHEET

MARKETING INFORMATION

Brief Description	20W 500mA fixC SR SNC ESSENCE Constant Current LED Driver
-------------------	--------------------------------------------------------------

PHYSICAL CHARACTERISTICS

Colour Finish	White
---------------	-------

MECHANICAL SPECIFICATION

Item Nett Weight (kg)	0.078kg
Length (mm)	101.5mm
Width (mm)	51mm
Height (mm)	22mm

ENERGY SPECIFICATION

Energy Class	A++ to A
--------------	----------

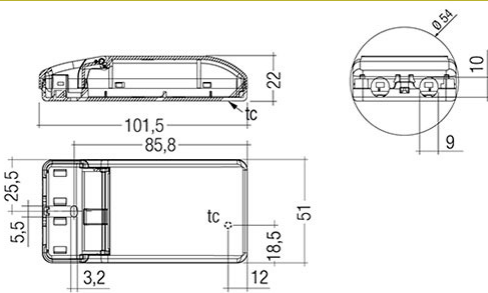
ELECTRICAL & SAFETY SPECIFICATION

Protection Class	Class 2 - Double Insulated
Dimmable	No
IP Rating	IP20

QUALITY STANDARDS

Average Life (hrs)	50000hrs
Warranty (yrs)	5yrs

LINE DRAWING



[Click to view the full product details](#)

OVERVIEW

Constant current Independent LED Driver with cable clamps, KC certificate, For luminaires with M and MM as per EN 60598, VDE 0710 and VDE 0711, Temperature protection as per EN 61347-2-13 C5e, Extra flat housing for constrained installation conditions.

Inspired Lighting Ltd. are continually developing and improving their products.
Technical specifications subject to change without prior notice.