

87500631

LC

Tridonic, LC 20W 350mA fixC C SNC, LED Converter Compact SNC - ESSENCE, Made In PRC, 5yrs Warranty



DATA SHEET

MARKETING INFORMATION

| | |
|-------------------|---|
| Brief Description | 20W 350mA fixC C SNC ESSENCE Constant Current LED Driver |
|-------------------|---|

PHYSICAL CHARACTERISTICS

| | |
|---------------|-------|
| Colour Finish | White |
|---------------|-------|

MECHANICAL SPECIFICATION

| | |
|-----------------------|---------|
| Item Nett Weight (kg) | 0.075kg |
| Length (mm) | 93mm |
| Width (mm) | 58mm |
| Height (mm) | 26.2mm |

ENERGY SPECIFICATION

| | |
|--------------|----------|
| Energy Class | A++ to A |
|--------------|----------|

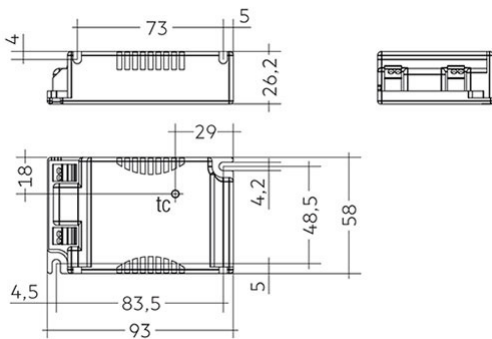
ELECTRICAL & SAFETY SPECIFICATION

| | |
|------------------|----------------------------|
| Protection Class | Class 2 - Double Insulated |
| Dimmable | No |
| IP Rating | IP20 |

QUALITY STANDARDS

| | |
|--------------------|----------|
| Average Life (hrs) | 50000hrs |
| Warranty (yrs) | 5yrs |

LINE DRAWING



[Click to view the full product details](#)

OVERVIEW

Constant current Fixed output built-in LED Driver, For luminaires of protection class I and protection class II, Temperature protection as per EN 61347-2-13 C5e, High efficiency and long life.

Inspired Lighting Ltd. are continually developing and improving their products.
Technical specifications subject to change without prior notice.