

87500666

LC

Tridonic, LC 100W 24V SC SNC, LED Driver Indoor Constant Voltage ESSENCE, Made In PRC, 5yrs Warranty



DATA SHEET

MARKETING INFORMATION

Brief Description	100W 24V SC SNC ESSENCE Constant Voltage LED Driver
-------------------	--

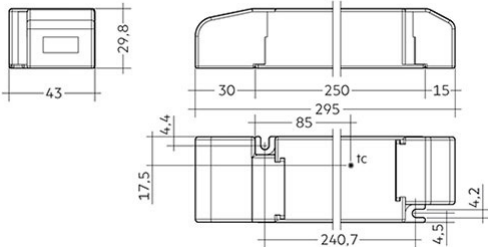
PHYSICAL CHARACTERISTICS

Colour Finish	White
---------------	-------

MECHANICAL SPECIFICATION

Item Nett Weight (kg)	0.227kg
Length (mm)	295mm
Width (mm)	43mm
Height (mm)	29.8mm

LINE DRAWING



ENERGY SPECIFICATION

Energy Class	A++ to A
--------------	----------

ELECTRICAL & SAFETY SPECIFICATION

Protection Class	Class 2 - Double Insulated
Dimmable	No
Dimmer Included	No
IP Rating	IP20

[Click to view the full product details](#)

QUALITY STANDARDS

Average Life (hrs)	50000hrs
Warranty (yrs)	5yrs

OVERVIEW

Constant voltage LED Driver, Nominal life-time up to 50000 hrs. Compact size and easy installation.

Inspired Lighting Ltd. are continually developing and improving their products.  
Technical specifications subject to change without prior notice.