

87500668

LC

Tridonic, LC 100W 24V SC SNC SP, LED Driver Indoor Constant Voltage ESSENCE, Made In PRC, 5yrs Warranty



DATA SHEET

MARKETING INFORMATION

Brief Description 100W 24V SC SNC SP ESSENCE
Constant Voltage LED Driver

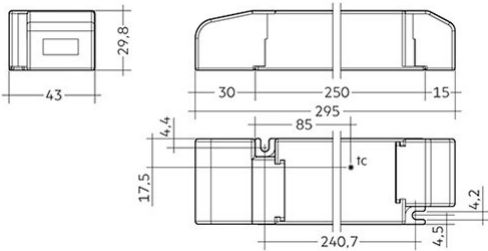
PHYSICAL CHARACTERISTICS

Colour Finish White

MECHANICAL SPECIFICATION

Item Nett Weight (kg) 0.227kg
Length (mm) 295mm
Width (mm) 43mm
Height (mm) 29.8mm

LINE DRAWING



[Click to view the full product details](#)

ENERGY SPECIFICATION

Energy Class A++ to A

ELECTRICAL & SAFETY SPECIFICATION

Protection Class Class 2 - Double Insulated
Dimmer Included No
IP Rating IP20

QUALITY STANDARDS

Average Life (hrs) 50000hrs
Warranty (yrs) 5yrs

OVERVIEW

Constant voltage LED Driver, Nominal life-time up to 50000 hrs. Compact size and easy installation.

Inspired Lighting Ltd. are continually developing and improving their products.
Technical specifications subject to change without prior notice.