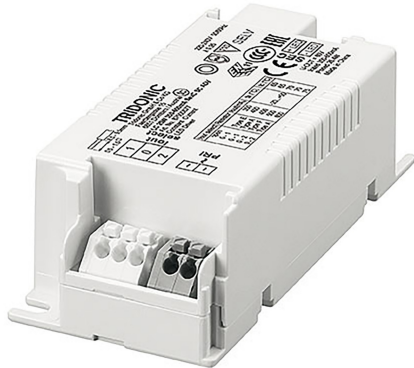


87500677

LC

Tridonic, LC 25W 350/400/450/500/600mA flexC SC ADV, LED Converter Compact ADVANCE, Made In PRC, 5yrs Warranty



DATA SHEET

MARKETING INFORMATION

Brief Description 25W 350-600mA flexC SC ADV
LED Constant Current LED Driver

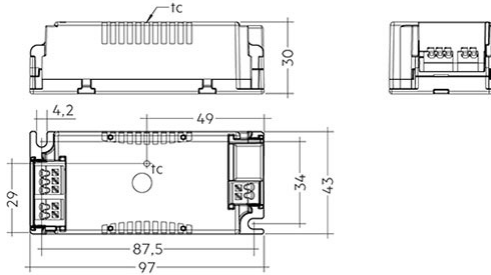
PHYSICAL CHARACTERISTICS

Colour Finish White

MECHANICAL SPECIFICATION

Item Nett Weight (kg) 0.083kg
Length (mm) 97mm
Width (mm) 43mm
Height (mm) 30mm

LINE DRAWING



ENERGY SPECIFICATION

Energy Class A++ to A

ELECTRICAL & SAFETY SPECIFICATION

Protection Class Class 2 - Double Insulated
Dimmable No
IP Rating IP20

QUALITY STANDARDS

Average Life (hrs) 50000hrs
Warranty (yrs) 5yrs

[Click to view the full product details](#)

OVERVIEW

Constant current LED Driver, Adjustable output current between 350 and 600 mA, in 5 steps with ADV plug technology, For luminaires of protection class I and protection class II, Temperature protection as per EN 61347-2-13 C5e, Compact design.

Inspired Lighting Ltd. are continually developing and improving their products.
Technical specifications subject to change without prior notice.