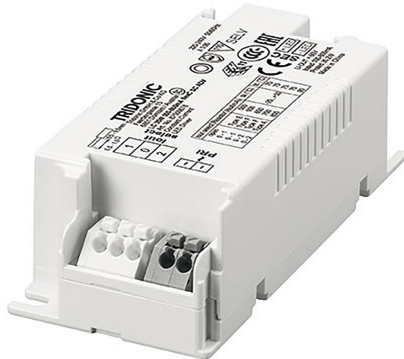


87500678

LC

Tridonic, LC 35W 500/600/650/700/800mA flexC SC ADV, LED Converter Compact ADVANCE, Made In PRC, 5yrs Warranty



DATA SHEET

MARKETING INFORMATION

Brief Description 35W 500-800mA flexC SC ADV Constant Current LED Driver

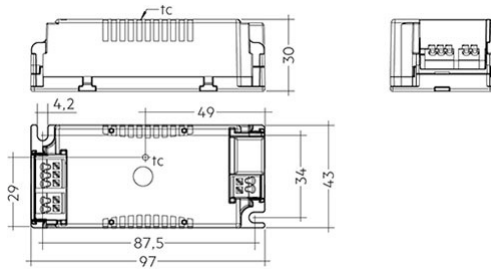
PHYSICAL CHARACTERISTICS

Colour Finish White

MECHANICAL SPECIFICATION

Item Nett Weight (kg) 0.1kg  
 Length (mm) 97mm  
 Width (mm) 43mm  
 Height (mm) 30mm

LINE DRAWING



ENERGY SPECIFICATION

Energy Class A++ to A

ELECTRICAL & SAFETY SPECIFICATION

Protection Class Class 2 - Double Insulated  
 Dimmable No  
 IP Rating IP20

QUALITY STANDARDS

Average Life (hrs) 50000hrs  
 Warranty (yrs) 5yrs

[Click to view the full product details](#)

OVERVIEW

Constant current LED Driver, Adjustable output current between 500 and 800 mA, in 5 steps with ADV plug technology, For luminaires of protection class I and protection class II, Temperature protection as per EN 61347-2-13 C5e, Compact design.

Inspired Lighting Ltd. are continually developing and improving their products. Technical specifications subject to change without prior notice.