

87500864

LC

Tridonic, LC 25/600/42 fixC SR ADV2, Advance Series Constant Current LED Driver , Made In PRC, 5yrs Warranty



DATA SHEET

MARKETING INFORMATION

Brief Description 25W 600mA fixC SR ADV2
Constant Current LED Driver

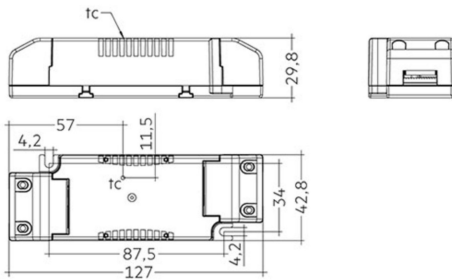
PHYSICAL CHARACTERISTICS

Colour Finish White

MECHANICAL SPECIFICATION

Item Nett Weight (kg) 0.08kg
Length (mm) 127mm
Width (mm) 43mm
Height (mm) 30mm

LINE DRAWING



ENERGY SPECIFICATION

Energy Class A++ to A

ELECTRICAL & SAFETY SPECIFICATION

Protection Class Class 2 - Double Insulated
Dimmable No
Dimmer Included No
IP Rating IP20

QUALITY STANDARDS

Average Life (hrs) 50000hrs
Warranty (yrs) 5yrs

[Click to view the full product details](#)

OVERVIEW

Constant current Fixed output built-in LED Driver, For luminaires of protection class II, Temperature protection as per EN 61347-2-13 C5e, High efficiency and long life.

Inspired Lighting Ltd. are continually developing and improving their products.
Technical specifications subject to change without prior notice.