

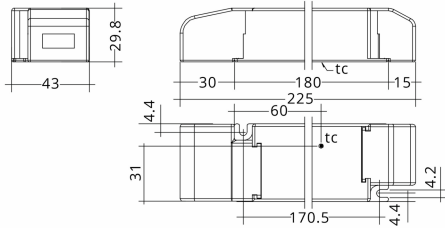
87501051

LC

Tridonic, LC 60W 24V SC SNC2, LED Driver Indoor Constant Voltage ESSENCE, Made In PRC, 5yrs Warranty



LINE DRAWING



[Click to view the full product details](#)

DATA SHEET

MARKETING INFORMATION

Brief Description: 60W 24V SC SNC2 ESSENCE Constant Voltage LED Driver

PHYSICAL CHARACTERISTICS

Colour Finish: White

MECHANICAL SPECIFICATION

Item Nett Weight (kg): 0.18kg
 Length (mm): 225mm
 Width (mm): 43mm
 Height (mm): 30mm

ENERGY SPECIFICATION

Energy Class: A++ to A

ELECTRICAL & SAFETY SPECIFICATION

Protection Class: Class 2 - Double Insulated
 Dimmable: No
 Dimmer Included: No
 IP Rating: IP20

QUALITY STANDARDS

Average Life (hrs): 50000hrs
 Warranty (yrs): 5yrs

OVERVIEW

Constant voltage LED Driver, Nominal life-time up to 50000 hrs. Compact size and easy installation.

Inspired Lighting Ltd. are continually developing and improving their products. Technical specifications subject to change without prior notice.