

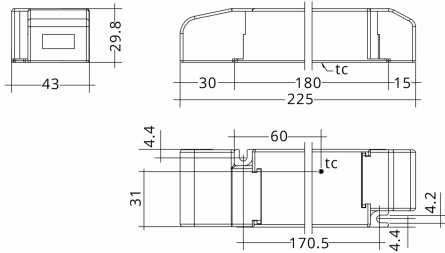
87501095

LC

Tridonic, LC 60W 48V SC SNC, LED Driver Indoor Constant Voltage ESSENCE, Made In PRC, 5yrs Warranty



LINE DRAWING



[Click to view the full product details](#)

DATA SHEET

MARKETING INFORMATION

Brief Description 60W 48V SC SNC ESSENCE  
Constant Voltage LED Driver

PHYSICAL CHARACTERISTICS

Colour Finish White

MECHANICAL SPECIFICATION

Item Nett Weight (kg) 0.187kg  
Length (mm) 225mm  
Width (mm) 43mm  
Height (mm) 30mm

ENERGY SPECIFICATION

Energy Class A++ to A

ELECTRICAL & SAFETY SPECIFICATION

Protection Class Class 2 - Double Insulated  
Dimmable No  
Dimmer Included No  
IP Rating IP20

QUALITY STANDARDS

Average Life (hrs) 50000hrs  
Warranty (yrs) 5yrs

OVERVIEW

Constant voltage LED Driver, Nominal life-time up to 50000 hrs. Compact size and easy installation.

Inspired Lighting Ltd. are continually developing and improving their products.  
Technical specifications subject to change without prior notice.